

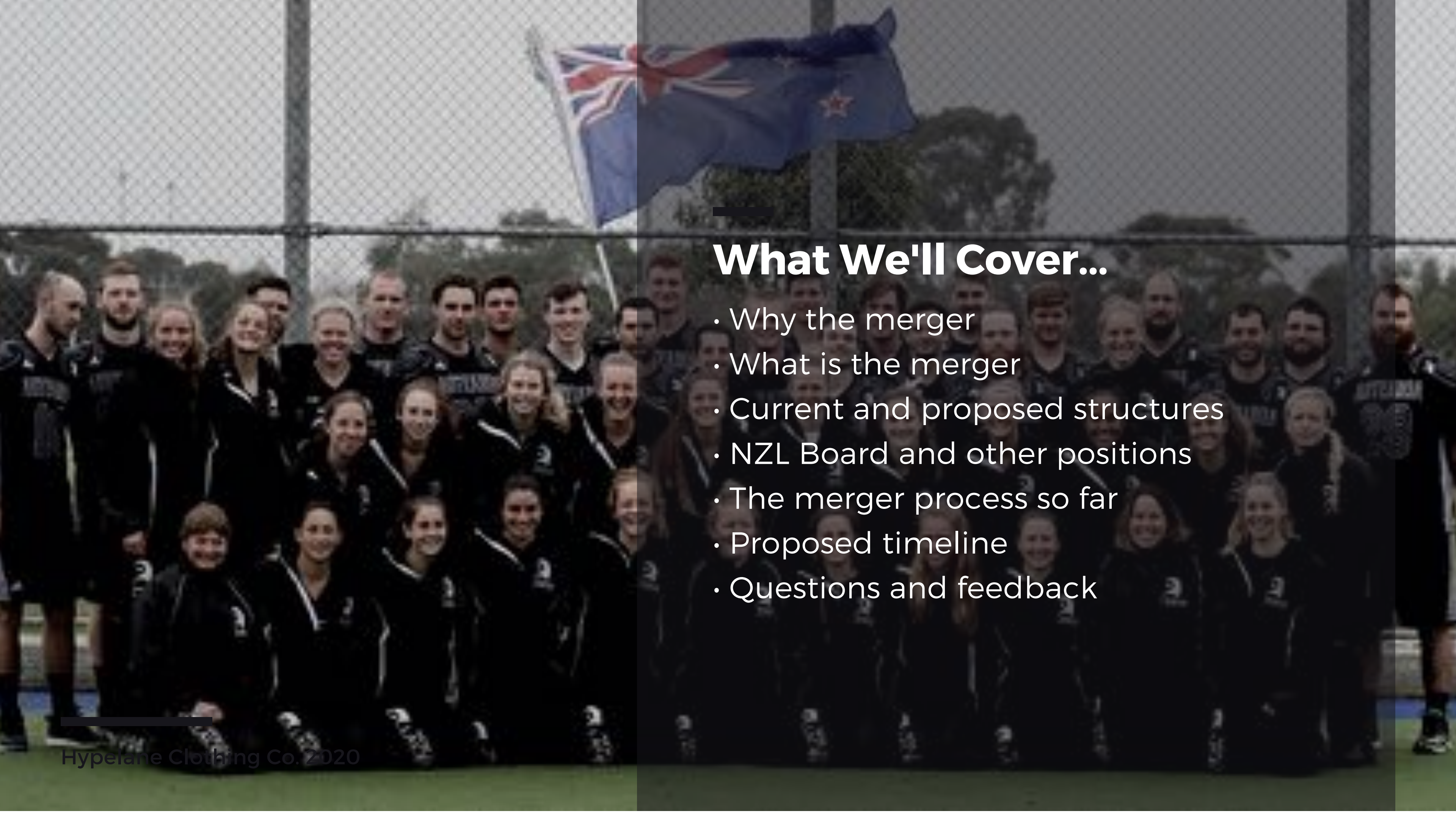


# NZL Merger Info Session

**NZ LACROSSE**

Please note: all members should review information on NZ Lacrosse website and draft constitution in the process of providing feedback





## What We'll Cover...

- Why the merger
- What is the merger
- Current and proposed structures
- NZL Board and other positions
- The merger process so far
- Proposed timeline
- Questions and feedback





## Why the Merger?

---

- Men and Women currently work separate to each other
- Fragmented and independent governance structures
- New societies framework in NZ
- We are a minority in NZ Sport and in World Lacrosse without a single governing body
- Opportunity to be a recognised partner of Sport NZ and NZ Olympic Committee

**We need this change to continue to grow and compete on the World stage**

# What is the Merger?

---

- NZWLA and NZALU would dissolve and merge with NZLA
- A new governing body for NZ Lacrosse
- Constitution drafted to future proof NZL governance as we continue to grow
- Board focused on long term strategic growth and set the direction for NZL
- Operating committee made up of roles similar to the committees today to manage the day to day





# Current NZL Structure

## **NZALU**

Nominal National Governing Body

## **NZLA**

NZ Men's Governing Body

## **NZWLA**

NZ Women's Governing Body

Waikato Men's  
& Women's  
(WLA)

Auckland  
Men's (NRLA)

Auckland  
Women's  
(ALA)

Wellington  
Men's &  
Women's

Canterbury  
Men's &  
Women's

Manawatu  
Men's &  
Women's

# Proposed New NZL Structure

**NZL**  
**National Governing Body**

**Board of Directors**  
(Led by Chairperson)

**Operational Committee**  
(Led by Chief Executive)

## **Regional Bodies**

Waikato

Auckland

Wellington

Canterbury

Manawatu

\*NRLA and ALA will be expected to merge

## **Associate Members**

## **Life and Honorary Members**



# The NZL Board

## BOARD MEMBERS

- 6 Elected Board Members
- 2 Appointed Board Members

## BOARD MEMBER TERM

- 3 year term
- May be re-elected for up to 3 consecutive terms
- May not hold Executive office in a regional body

## BOARD APPOINTMENTS

- Board Appointments panel - Board Chair and 2 independent people
- Panel review applications and decide on appointed members
- Panel review applications and put forward for vote elected members

## BOARD RESPONSIBILITIES

- Exercise all powers of the NZL
- Create and adopt strategic direction, annual plan and budgets for NZL
- Established sub-committees, policies and procedures
- Delegate powers to agreed positions



# Other NZL Positions

## BOARD CHAIR

- Member of the Board
- Elected by the Board Members
- Leads the Board of Directors

## CHIEF EXECUTIVE

- Reports to the Board
- Responsible for the day to day management
- Leads the Operating Committee

## NZL PRESIDENT

- Potential role in future
- Elected at General Meeting
- Titular figure
- Chairperson would hold this role if not in place



# Voting Powers

## Voting Eligibility

- Up to 2 delegates from each Regional Body
- Board members, life members and honorary members - may attend and speak at General Meetings, but may not vote
- Up to 2 delegates from each associate members may attend, but not vote. They may speak if invited to do so
- Delegates may be present in person, by written proxy or by video conference

## Voting Entitlements

Based on number of registered players for each Regional Body:

- 99 or less = 1 vote to be shared by delegates (1 vote)
- 100-299 = 1 vote per delegate (2 votes)
- 300-749 = 2 votes per delegate (4 votes)
- 750 - 1,499 = 3 votes per delegate (6 votes)
- 1,500 or more = 4 votes per delegate (8 votes)

## General Meeting

- Voting may only occur at a SGM or AGM
- President or otherwise appointed person shall chair
- 2 scrutineers appointed for secret ballots (election of positions)





# The Merger Process So Far...

## **WORKING GROUP**

Made up of NZL Executive members from Men's and Women's side.

## **EXTERNAL LAWYER**

Independent lawyer consulted with across many iterations of the draft constitution and timeline. DLA Piper, sports governance background.

## **EXTERNAL REVIEW**

Support from Sport NZ and review of a number of different NZ sporting code's constitutions.

## **DRAFT CONSTITUTION**

Drafted with future proofing in mind - expectation of continued growth and sustainable governance.



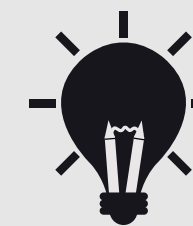
# Proposed Timeline



**1 March - 17 May**  
Feedback Period



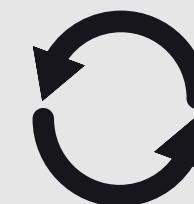
**15 & 21 April**  
NZL Info Sessions



**17 - 24 May**  
Review Feedback



**24 May**  
Publish final draft



**24 May - 3 June**  
Regional Bodies  
Final Feedback



**17 June**  
NZLA AGM



**June**  
Interim NZL Board  
appointed



**June - September**  
NZALU & NZWLA  
AGM/SGMs



**July**  
NZL Membership  
Submissions

Please see full timeline on NZ  
Lacrosse website





**Questions?  
Feedback?**

**Nicole:** [President@NZWLacrosse.nz](mailto:President@NZWLacrosse.nz)

**Tom:** [tpn.deane@gmail.com](mailto:tpn.deane@gmail.com)